



LUCY 18

MATERIAL:

- Vertical collectors in painted mild steel \varnothing 30 mm.
- Horizontal heating elements in painted mild steel \varnothing 18 mm.

FIXING KIT:

Brackets, airvent, hexagonal tool, plugs and screws for mounting suitable for use on compact or hollow brick, user notice.
The kit is certified from TÜV in compliance with VDI 6036-class 4.

PACKAGING:

Carton angular and profiles protected by a recyclable film in polyethylene. User notice included.

PAINTING PROCESS:

Painted with ecological epoxy powders. (Certificate DIN 55900-1,-2)

COLOURS:

Radiator and accessories: standard white colour RAL 9010-R01.
For other colours see Colour chart chapter.

ACCESSORIES:

See Accessories chapter

Functioning:	<input checked="" type="checkbox"/> Hot water	<input checked="" type="checkbox"/> Electric (see page 336)	<input checked="" type="checkbox"/> Dual energy
--------------	---	--	---

P. Max: 8 bar	Functioning: hot water	T. Max: 110° C	Connections: 2 x 1/2" gas - 1 x 1/2" gas for airvent
---------------	------------------------	----------------	--

CERTIFICATIONS



ACCESSORIES

Kristal valve square With thermostatic option White R01 - ral 9010



Copper conn. \varnothing 12/14/15
Art. nr. 5991990311161

Multilayer conn. \varnothing 16
Art. nr. 5991990311160



Kit 2 Hooks WHITE RAL 9010 - R01

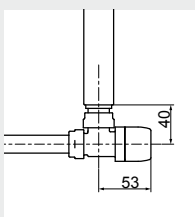
Art. nr. 5991990310388



Towel bar WHITE RAL 9010 - R01 (width 440 mm)

Available with width
 \geq 500 mm

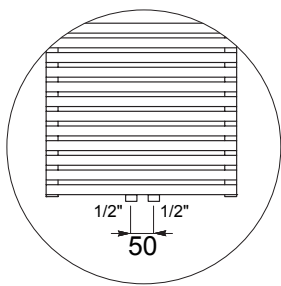
Art. nr. 5991990331126



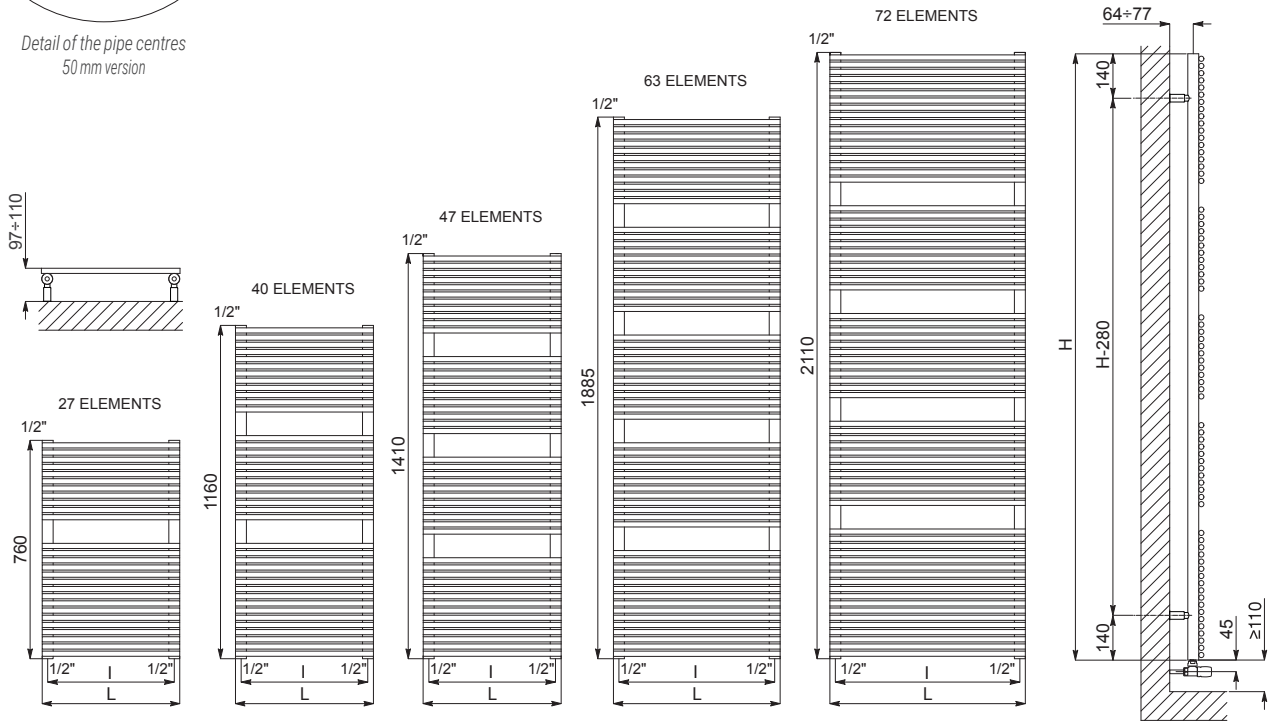
Quotes for square Kristal valves
with thermostatic option

If ordered separately from the radiator, the accessories are available in standard white only.

Accessories and spare parts - see Accessories chapter



Detail of the pipe centres
50 mm version



Quotes for Kristal valves

LUCY 18

Height [mm]	WIDTH L [mm]	Pipe Centres l [mm]	Art. nr.	Pipe Centres 50 mm		Thermal output [Watt]			Dual energy kit [Watt]		
				Art. nr.	Dry Weight [Kg]	Surface [m ²]	Water content [lt]	$\Delta t=50^{\circ}\text{C}$		$\Delta t=30^{\circ}\text{C}$	Exp. n
760	430	400	3551406100300	3551406100320	6,7	0,75	2,9	436	238	1,1839	500
	480	450	3551406100304	3551406100324	8,0	0,88	3,3	489	268	1,1780	500
1160	430	400	3551406100301	3551406100321	11,0	1,19	4,6	631	341	1,2071	700
	480	450	3551406100305	3551406100325	12,0	1,30	4,9	705	383	1,1960	700
	530	500	3551406100308	3551406100328	13,0	1,42	5,3	779	425	1,1852	700
	580	550	3551406100312	3551406100332	13,9	1,53	5,7	852	468	1,1743	700
1410	430	400	3551406100302	3551406100322	13,0	1,40	5,4	753	407	1,2065	700
	480	450	3551406100306	3551406100326	14,2	1,54	5,9	838	455	1,1971	900
	530	500	3551406100309	3551406100329	15,3	1,67	6,4	923	503	1,1876	900
1885	580	550	3551406100313	3551406100333	16,5	1,81	6,2	1008	552	1,1782	900
	430	400	3551406100303	3551406100323	17,5	1,87	7,3	986	533	1,2054	900
	480	450	3551406100307	3551406100327	19,1	2,07	7,9	1090	591	1,1988	1200
	530	500	3551406100310	3551406100330	20,5	2,24	8,5	1194	649	1,1922	1200
2110	580	550	3551406100314	3551406100334	22,2	2,44	9,1	1298	708	1,1856	1200
	530	500	3551406100311	3551406100331	23,4	2,56	9,7	1322	722	1,1853	1200
	580	550	3551406100315	3551406100335	25,2	2,76	10,3	1438	788	1,1779	1200
	730	700	3551406100316	3551406100336	30,7	3,38	12,5	1768	980	1,1558	1200

Art. nr. are referred to colour WHITE R01 - RAL 9010 version.

For output at different Δt than 50°C , please refer to the following formula: desired output = output at $\Delta t 50^{\circ}\text{C} \times (\text{desired } \Delta t/50)^{1.4}$